

# Simplify your dental care experience

**Let's face it:** For many of us, visiting the dentist isn't always our favorite activity. That's why the insurance side of the experience should be simple – and we get that.

This handy step-by-step guide can help you better understand your dental insurance journey.

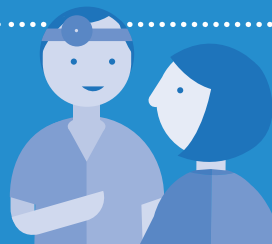
## Path 1

You need a routine visit



## Path 2

You need dental work



## Path 3

You need more information



## Path 1: You need a routine visit

They say an ounce of prevention is worth a pound of cure. Seeing your dentist regularly for routine care helps you avoid problems down the line. **So, how do you make it happen?**



### Find a network dentist.

Your out-of-pocket costs will be lower and you may even qualify for in-network discounts. How?

Check your ID card  
for your network

and

Go online to  
[principal.com/dentist](https://principal.com/dentist)

or

Give us a call:  
**800-247-4695**



### Confirm network participation.

When you schedule your appointment, confirm the provider is still in the network.

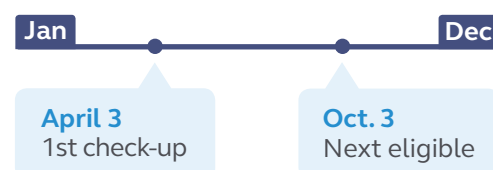


### Make sure you're eligible.

Depending on your policy, it may be too soon to schedule an appointment.

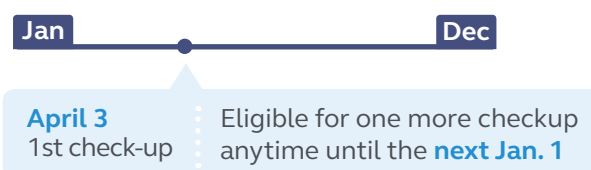
#### Example 1

One check-up every 6 months



#### Example 2

Check-ups twice a year



## Path 2: You need dental work

When your teeth need special treatment, it's up to you and your dentist to decide what work needs to be done.

### What are your next steps?

- 1 Talk to your dentist about submitting a **pre-determination**.
- 2 Remind your dentist to provide **supporting documentation**.
- 3 Plan for a processing period of 10 to 14 business days.
- 4 Call us with questions at 800-247-4695.

### What's a pre-determination?

It's a review of the claim by a licensed dentist to determine if the procedure is dentally necessary and will be covered by your insurance.

### Why do I need one?

- Prevents surprises about what will be paid
- Details the costs we cover and what you're responsible for, such as deductible, co-insurance or non-covered services

## Path 3 – You need more information

You're not in this alone. Have questions? We have answers.



Call us at  
800-247-4695.



Send us a note via  
[principal.com/  
contact us](mailto:principal.com/contact).

We'll get back  
to you within  
24-48 hours.



Download the Principal  
Mobile smart phone app!

It's free and compatible  
with both Android and  
Apple devices. Look for  
it in Google Play or the  
Apple App Store.



Visit us on the web at  
[principal.com/individuals/  
insure/get-started](http://principal.com/individuals/insure/get-started).



Dental insurance from Principal® is issued by Principal Life Insurance Company, Des Moines, Iowa 50392-0002, [principal.com](http://principal.com).

This is an overview of the benefits dental insurance provides, but there are limitations and exclusions. For additional details, contact your employer.

Principal, Principal and symbol design and Principal Financial Group are trademarks and service marks of Principal Financial Services, Inc., a member of the Principal Financial Group.

GP61805-01 | 12/2016 | © 2016 Principal Financial Services, Inc.